

**IL22 Antibody (Center)**  
**Affinity Purified Rabbit Polyclonal Antibody (Pab)**  
**Catalog # AP14032c****Specification**

---

**IL22 Antibody (Center) - Product Information**

Application	WB,E
Primary Accession	<a href="#">O9GZX6</a>
Other Accession	<a href="#">O9JY9</a> , <a href="#">NP_065386.1</a>
Reactivity	Human
Predicted	Mouse
Host	Rabbit
Clonality	Polyclonal
Isotype	Rabbit IgG
Calculated MW	20011
Antigen Region	44-73

**IL22 Antibody (Center) - Additional Information****Gene ID** 50616**Other Names**

Interleukin-22, IL-22, Cytokine Zcyto18, IL-10-related T-cell-derived-inducible factor, IL-TIF, IL22, ILTIF, ZCYTO18

**Target/Specificity**

This IL22 antibody is generated from rabbits immunized with a KLH conjugated synthetic peptide between 44-73 amino acids from the Central region of human IL22.

**Dilution**

WB~~1:1000

E~~Use at an assay dependent concentration.

**Format**

Purified polyclonal antibody supplied in PBS with 0.09% (W/V) sodium azide. This antibody is purified through a protein A column, followed by peptide affinity purification.

**Storage**

Maintain refrigerated at 2-8°C for up to 2 weeks. For long term storage store at -20°C in small aliquots to prevent freeze-thaw cycles.

**Precautions**

IL22 Antibody (Center) is for research use only and not for use in diagnostic or therapeutic procedures.

**IL22 Antibody (Center) - Protein Information****Name** IL22

**Synonyms** ILTIF, ZCYTO18

**Function** Cytokine that plays a critical role in modulating tissue responses during inflammation (PubMed:[17204547](#)). Plays an essential role in the regeneration of epithelial cells to maintain barrier function after injury and for the prevention of further tissue damage (PubMed:[17204547](#)). Unlike most of the cytokines, has no effect on immune cells. Signals through a heterodimeric receptor composed of two subunits, the specific receptor IL22RA1 which is present on non-immune cells in many organs and the shared subunit IL10RB (PubMed:[10875937](#), PubMed:[18599299](#)). Ligation of IL22RA1 with IL22 induces activation of the tyrosine kinases JAK1 and TYK2, which in turn activates STAT3. In turn, promotes cell survival and proliferation through STAT3, ERK1/2 and PI3K/AKT pathways (PubMed:[25793261](#), PubMed:[31311100](#)). Promotes phosphorylation of GSK3B at 'Ser-9' and CTTN (By similarity). Promotes epithelial cell spreading (By similarity).

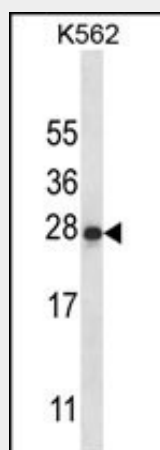
**Cellular Location**

Secreted.

**IL22 Antibody (Center) - Protocols**

Provided below are standard protocols that you may find useful for product applications.

- [Western Blot](#)
- [Blocking Peptides](#)
- [Dot Blot](#)
- [Immunohistochemistry](#)
- [Immunofluorescence](#)
- [Immunoprecipitation](#)
- [Flow Cytometry](#)
- [Cell Culture](#)

**IL22 Antibody (Center) - Images**

IL22 Antibody (Center) (Cat. #AP14032c) western blot analysis in K562 cell line lysates (35ug/lane). This demonstrates the IL22 antibody detected the IL22 protein (arrow).

**IL22 Antibody (Center) - Background**

Cytokine that contributes to the inflammatory response in vivo.

**IL22 Antibody (Center) - References**

Meng, S., et al. J Mol Cell Biol 2(4):223-230(2010)  
Thompson, C.L., et al. Cancer Causes Control 21(8):1165-1170(2010)  
Lafdil, F., et al. Cell. Mol. Immunol. 7(4):250-254(2010)  
Schuurhof, A., et al. Pediatr. Pulmonol. 45(6):608-613(2010)  
Davila, S., et al. Genes Immun. 11(3):232-238(2010)